



PRINCETON INSTITUTE OF ENGINEERING AND TECHNOLOGY FOR WOMEN
Vijayapuri colony Chowdaryguda (V), Ghatkesar (M), Medchal (D), TS-500088
(Affiliated to JNTUH, Hyderabad & Approved by AICTE, New Delhi)

7.1.2

The Institution has the Facilities and Initiatives for Alternate Sources of Energy and Energy Conservation Measures


Principal
PRINCETON INSTITUTE OF ENGINEERING
& TECHNOLOGY FOR WOMEN
Chowdaryguda, Korremula (V),
Ghatkesar (M), Medchal Dist, TS-500088



BIO GAS PLANT

Capacity: 1.5 cum Plant

CONTENT

1. DESIGN BASIS
2. TECHNICAL NOTE
3. FIBER COATING SPECIFICATIONS
4. ADVANTAGES OF KVIC MODEL
5. LIST OF EXCLUSIONS

The Waste Treatment Plant has been designed based on the following parameters.

Waste generated from	:	College
Type of waste	:	Food waste
Quantity of waste generated	:	5 kg

TECHNICAL DETAILS

1	Process	Anaerobic Digester
2	Reactor	Vertical Reactor Portable made
3	Reactor Type	Double Partitioned
4	Design	Water Sealed Jacketed Column
5	Extraction System	Flooding Type Automatic With Respect To Fresh Feed
6	Capacity	1.5 Cum
7	Treatment Capacity per Day	5 kg
8	Gas Production	0.7 kg Of Equivalent LPG GAS
9	Structure	Digester above ground or partially below ground
10	Holder Movements	Horizontal Type
11	Feed	Food waste



PRINCETON INSTITUTE OF ENGINEERING AND TECHNOLOGY FOR WOMEN
Vijayapuri colony Chowdaryguda (V), Ghatkesar (M), Medchal (D), TS-500088
(Affiliated to JNTUH, Hyderabad & Approved by AICTE, New Delhi)

The plant can treat 5 kg Food waste per day with a capacity of 1.5 m³. The main part of the biogas plant is digester, which has got two chambers. One is solid waste chamber and the other is liquid waste chamber. The waste directly goes to the solid waste chamber inside the digester. In the first chamber food waste remains for 70 to 80 days, then it converted in to semi liquid form. After that it moves to the second chamber where it remains for 20 to 25 days. Then it purely converted in to slightly viscous blackish liquid which automatically pumps out from the slurry pipe.

Fiber Coating specification

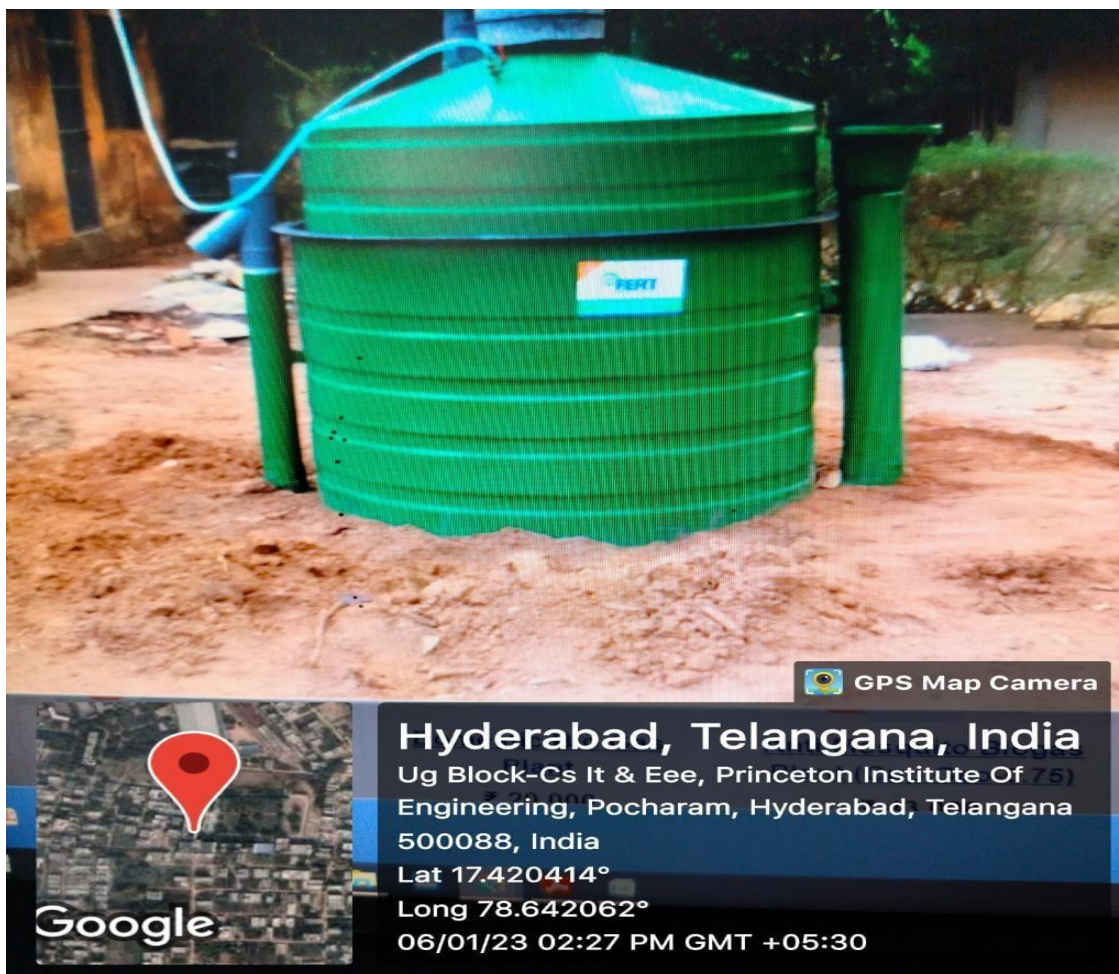
1. Polyester ISO Resin
2. Polyester ISO Resin Gel coat
3. Glass fiber mat 600E
4. G.I pipe with Gas holder B-CLASS 3" pipe.

ADVANTAGES OF KVIC Model

Stable under large load variations
· Tolerant to disturbances
· Recovery very quickly after major upsets
No Clogging of reactors
· No risk of Sludge Bulking
Excellent Strength to retain high pressure of Gas
Expert Fabrication
· Customized Design & Fabrication
· Long Life
· Cost Effective
· Easy Maintenance



PRINCETON INSTITUTE OF ENGINEERING AND TECHNOLOGY FOR WOMEN
Vijayapuri colony Chowdaryguda (V), Ghatkesar (M), Medchal (D), TS-500088
(Affiliated to JNTUH, Hyderabad & Approved by AICTE, New Delhi)

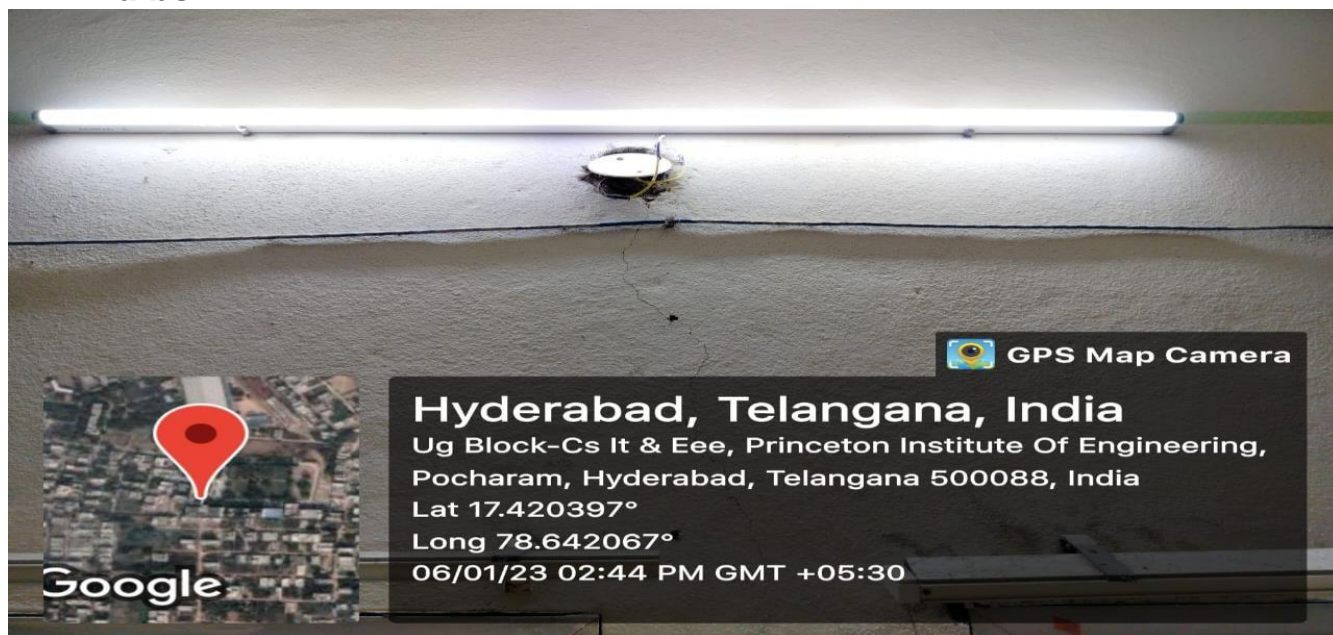


P. Jyoti
Principal
PRINCETON INSTITUTE OF ENGINEERING
& TECHNOLOGY FOR WOMEN
Chowdaryguda, Korremula (V),
Ghatkesar (M), Medchal Dist, TS-500088

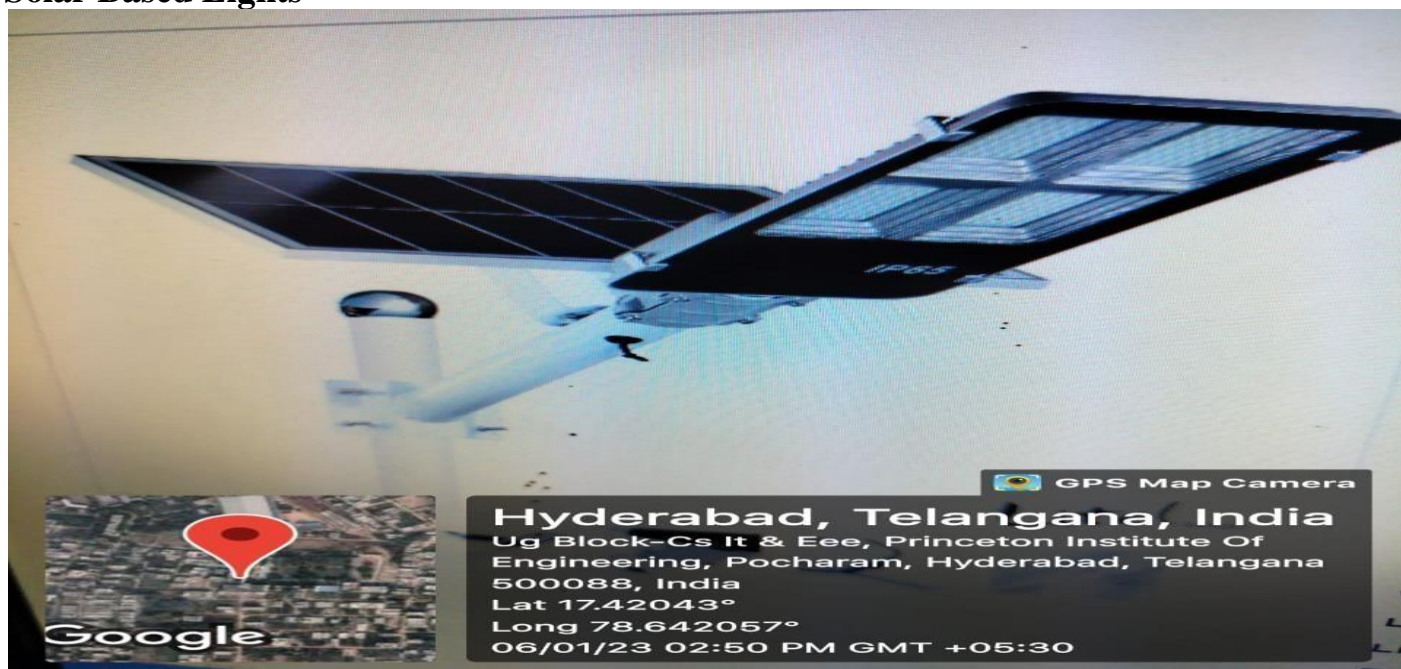


PRINCETON INSTITUTE OF ENGINEERING AND TECHNOLOGY FOR WOMEN
Vijayapuri colony Chowdaryguda (V), Ghatkesar (M), Medchal (D), TS-500088
(Affiliated to JNTUH, Hyderabad & Approved by AICTE, New Delhi)

LED Bulbs



Solar Based Lights





PRINCETON INSTITUTE OF ENGINEERING AND TECHNOLOGY FOR WOMEN
Vijayapuri colony Chowdaryguda (V), Ghatkesar (M), Medchal (D), TS-500088
(Affiliated to JNTUH, Hyderabad & Approved by AICTE, New Delhi)

Solar Energy:

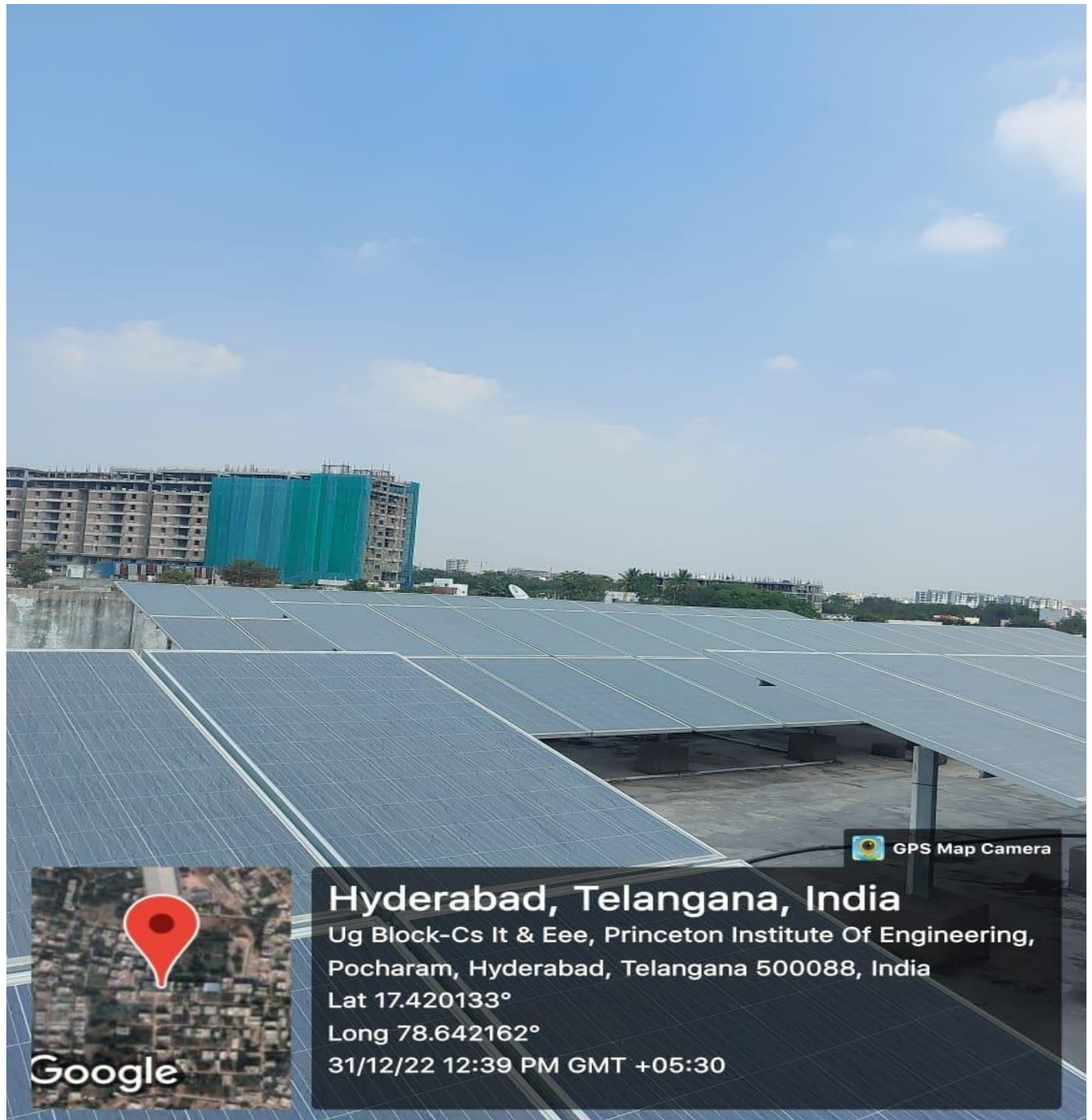
7.1.2.1 Table of Solar Power Plant Specifications and Energy Consumption

No of Photo Voltaic Cells	Each Cell Energy Produced	Total Power Produced	Inverter Specifications
45	335 WP	$P = (45 \times 335) = 15,075 \text{ W}$ 15 KW	DC-AC Converter – 15KW Max I/P: 1000 V DC Rated Vtg: 600 V DC Rated Power: 15,000 Watts
Transformer	Technical Specifications	Standard Value	Difference
11KV / 433V	Type : Out door Rated KVA: 63 Rated Voltage: HV 11KV LV 433V Rated Current: HV 3.306A LV 84.00A	Power Factor: 0.8 Transformer: 11KV / 433 V Solar Inverter: 1000V / 600V 15,000 Watts	Transformer PV KVA – KVA 18750 KVA – 11000 KVA = 7750 KVA/0.8KW Total Full Load Power Saved = 6200 Watts



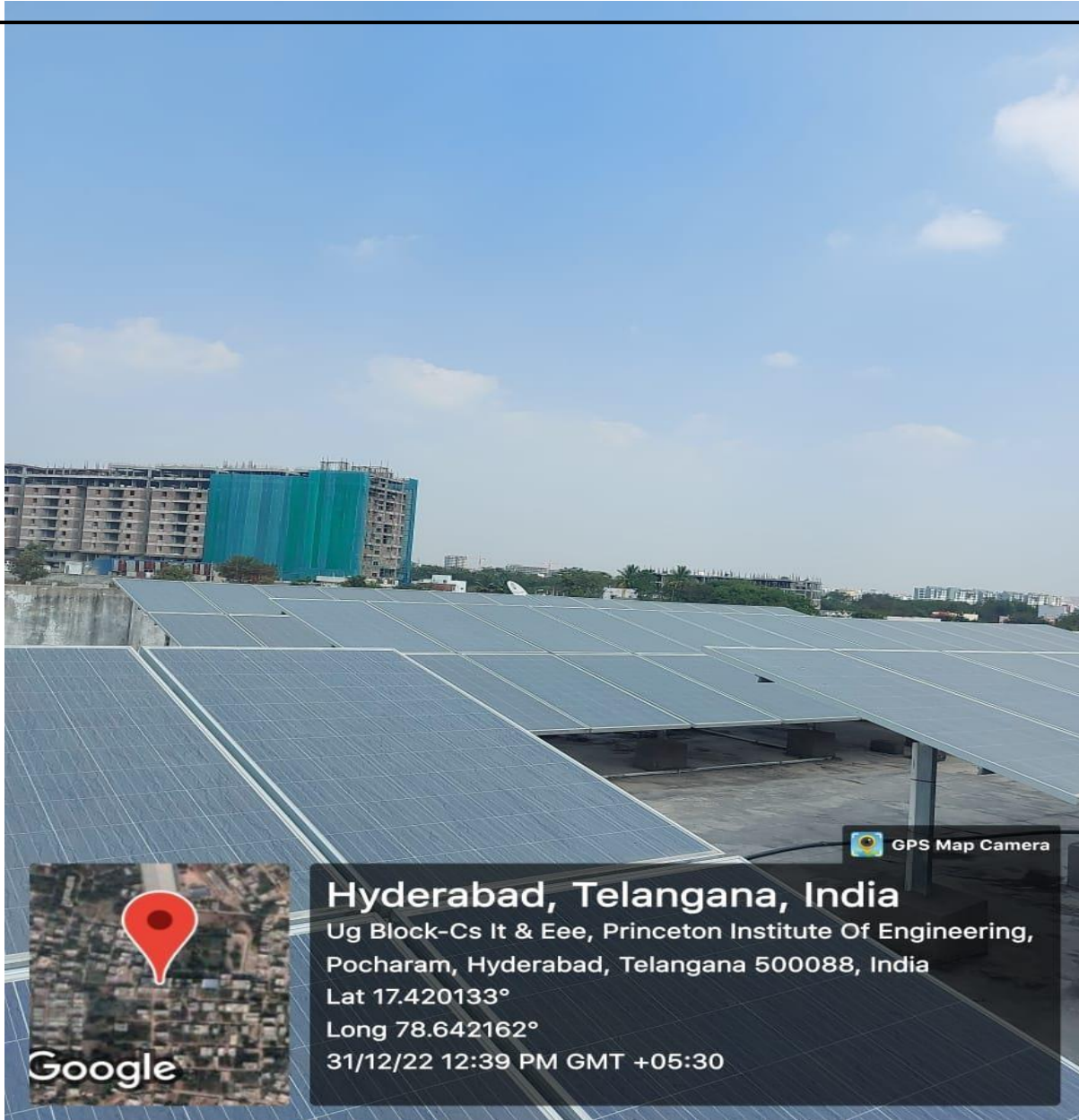
PRINCETON INSTITUTE OF ENGINEERING AND TECHNOLOGY FOR WOMEN
Vijayapuri colony Chowdaryguda (V), Ghatkesar (M), Medchal (D), TS-500088
(Affiliated to JNTUH, Hyderabad & Approved by AICTE, New Delhi)

Photos





PRINCETON INSTITUTE OF ENGINEERING AND TECHNOLOGY FOR WOMEN
Vijayapuri colony Chowdaryguda (V), Ghatkesar (M), Medchal (D), TS-500088
(Affiliated to JNTUH, Hyderabad & Approved by AICTE, New Delhi)



Photo


Principal
PRINCETON INSTITUTE OF ENGINEERING
& TECHNOLOGY FOR WOMEN
Chowdaryguda, Korremula (V),
Ghatkesar (M), Medchal Dist, T S-500088

Email: Princeton.womenengg@gmail.com, Website: www.petw.co.in